

# BPK plastic blank plates

for screw assembly / IP64 / UL Type 12



BPK Blank plates seal cut-outs for standard 10-pole / 16-pole / 24-pole industrial connectors with protection rating up to IP64 / UL type 12.

Blank plates are mounted via screws.

IP54

IP64

UL TYPE  
12

CE  
US

RoHS  
compliant

REACH  
COMPLIANCE

Made in  
Germany

## Specifications

IP rating (EN 60529)	IP54, IP64
UL Type (UL 50E)	UL Type 12
Material	Polypropylene Integrated sealing lip: Elastomer
Flame class	UL94-V0, self-extinguishing
Operating temperature	-30 C° to 110 C°
Properties	silicone free, halogen free
Mounting options	Screw type mounting

## Advantages & Benefits

■ Integrated gasket

## Product types & Sizes

BPK 24



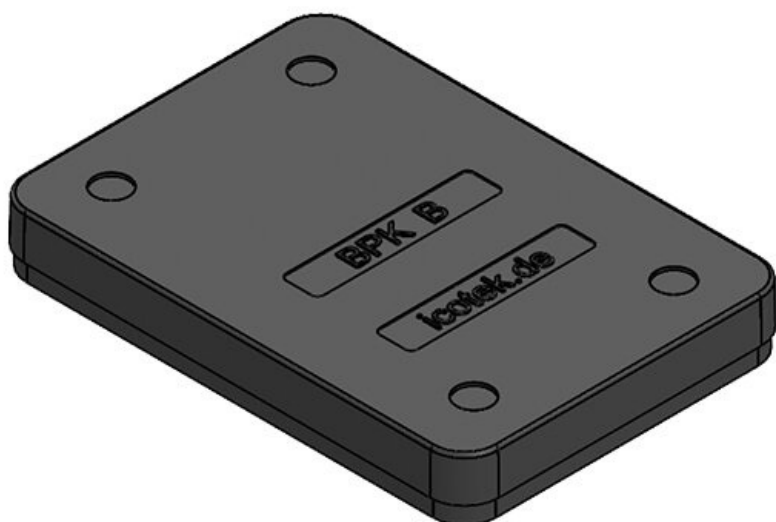
Part No.	<b>42024</b>	No. of screw	<b>4</b>
EAN	<b>4251269307</b>	holes	
	<b>515</b>	Diam. of screw	<b>5,5 mm</b>
Package quantity	<b>10</b>	holes	
Length	<b>148 mm</b>		
Width	<b>53 mm</b>		
Height	<b>10,3 mm</b>		
Cut-out size	<b>112 x 36 mm</b>		

**BPK 16**

Part No.	<b>42016</b>	No. of screw	<b>4</b>
EAN	<b>4251269307</b>	holes	
	<b>478</b>	Diam. of screw	<b>5,5 mm</b>
Package quantity	<b>10</b>	holes	
Length	<b>121 mm</b>		
Width	<b>53 mm</b>		
Height	<b>10,3 mm</b>		
Cut-out size	<b>86 x 36 mm</b>		

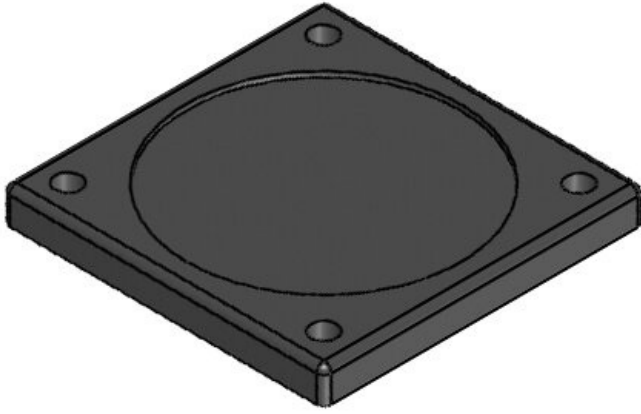
**BPK 10**

Part No.	<b>42015</b>	No. of screw	<b>4</b>
EAN	<b>4251269307</b>	holes	
	<b>454</b>	Diam. of screw	<b>5,5 mm</b>
Package quantity	<b>10</b>	holes	
Length	<b>101 mm</b>		
Width	<b>53 mm</b>		
Height	<b>10 mm</b>		
Cut-out size	<b>65 x 36 mm</b>		

**BPK-B**

Part No.	<b>42010</b>	No. of screw	<b>4</b>
EAN	<b>4251269307</b>	holes	
	<b>393</b>	Diam. of screw	<b>5,5 mm</b>
Package quantity	<b>10</b>	holes	
Length	<b>76 mm</b>		
Width	<b>53 mm</b>		
Height	<b>10,3 mm</b>		
Cut-out size	<b>46 x 46 mm</b>		

BPK-JFX



Part No.	<b>42620</b>	Diam. of screw	<b>6,9 mm</b>
EAN	<b>4251269309</b>	holes	
	<b>045</b>		
Package quantity	<b>5</b>		
Length	<b>88 mm</b>		
Width	<b>88 mm</b>		
Height	<b>9 mm</b>		
No. of screw holes	<b>4</b>		

---

**icotek**<sup>®</sup>  
smart cable management